

TEACHING & LEARNING CENTRE



**Inspiring
Excellence**
**Enabling
Success**

TEACHING & LEARNING CENTRE



2022

CONTENTS

02	Director's Message	02
03	Numbers at a Glance	
	Student Development	03
	Faculty Development Workshop Attendance	
04	Student Development	
	Academic Support for Restart Students	04
	Coaching Series	05
06	Faculty Development	
	New PDTL Workshops	06
	Attendance of TLC Faculty Development Workshop by Schools	
	Rebranding of Teaching & Learning Conversation and In Conversation with TLC	07
08	Key Events	
	Inaugural SUSS SoTL Symposium 2022	09
	Faculty Appreciation Event 2022	
	Start of Semester – January 2022	10
	Start of Semester – July 2022	
	Top Highlights of Key Events	11
12	Scholarship of Teaching & Learning	
	Progress Update – Research Project MOETRF-019-020	12
	Formation of SoTL Special Interest Group (SIG)	
	New Grants Awarded	13
14	Training and Consultancy	14
15	Acknowledgements	15

Director's Message

Like many, against the complex circumstances, TLC has had to respond with agility to the uncertainties brought about by the global situation and the pandemic. As I reflect, I am inspired by the work of the TLC team. They have undoubtedly thrived, having adapted well to the changing work

functions and further calls to serve. Through their work, connections with colleagues across the university and beyond have been fostered, and our academic community continue to be supported.

As we respond to the discontinuities, we remain guided by our strategic priorities to inspire excellence and enable success for both student and instructor. To further shape teaching and learning, we augmented and developed more courses for instructor professional development, as well as courses for student support. In some, instructors were guided to leverage best practices in instruction within an online setting, and in others, students were offered targeted academic coaching sessions. Through these courses, I draw attention to the sustained and increased interest in teaching and learning across the university.

In supporting the university's charge to be a vanguard of lifelong learning, we continue to remain contemporaneous with teaching and learning innovations around the world, undergirded by research.

Particularly, we started a special interest group keen to bring out the best in their students and themselves through research within the scholarship of teaching and learning (SoTL). Perhaps the most inspiring form of this group's interest can be found within the inaugural SUSS SoTL symposium which saw the launch of the new SUSS curriculum, and the SoTL research agenda which was conceptualised with insights from international and local experts.

As you read the following pages that highlight just a few of the many works that relate to strategic priorities TLC has undertaken, I trust you will appreciate TLC's efforts and accomplishments as much as I do. All these were made possible by the support afforded by the university, which enabled the TLC team to build capabilities while keeping their commitment to excellence in teaching and learning support, and collegiality.



Associate Professor Rebekah Lim
Director, Teaching & Learning Centre
Deputy Dean, College of Interdisciplinary
& Experiential Learning

Numbers at a Glance

Student Development

14 courses

49 course presentations

1842 student participants



Faculty Development

18 courses

35 course presentations

12 TLC Events

1185 participants



SoTL Grants

2 grants



~\$310,000

Student Development

Academic Support for Restart Students

The support programme for restart students piloted in July 2021 was rolled out fully in January 2022. The programme was put in place to help restart students better prepare themselves for their second attempt at academic studies in SUSS.

The programme consists of two parts:

01

A self-paced online course in Canvas and bite-sized learning activities delivered via the Gnowbe platform

02

Optional one-to-one academic coaching that students complete during their “cooling off” semester

Approximately 50 students have gone through the programme across two semesters. Students who completed the programme have shared that they now better understand the rigour and requirements of doing a part-time undergraduate degree while balancing work and life.



Coaching Series

From 2023, TLC's Coaching services will be transferred to the College of Interdisciplinary and Experiential Learning. Since its inception in July 2018, a total of 1950 hours of writing coaching sessions have been conducted. These one-to-one personalised coaching sessions were welcomed by students who appreciated the coaches' undivided attention on how they could further improve their academic writing skills. Similarly, a total of 100 hours of speaking coaching sessions were conducted to help students improve their presentation skills. The Coaching Series has been fruitful, with more than 1000 students benefiting from these free personalised services offered to all SUSS students.

Numbers:



2053
hours



~1000
students

Faculty Development

New PDTL Workshops

Three new professional development in teaching and learning workshops were introduced this year:



AD137

Learning Design for Adult Learners



AD152

Sticky Presentations – Designing Presentation Slides for Teaching

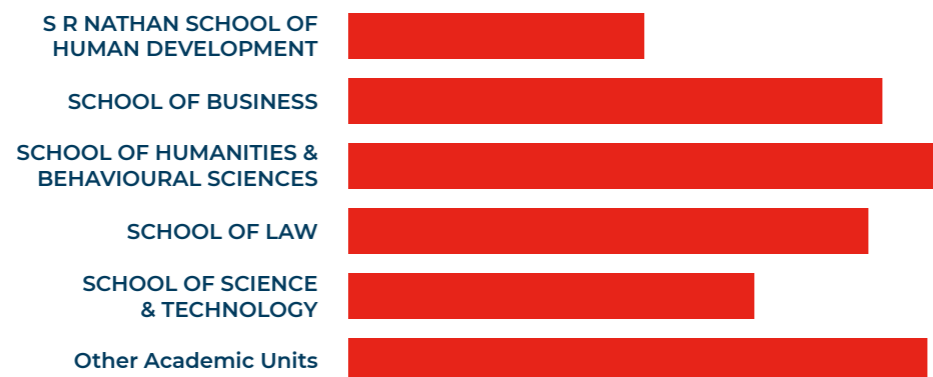


AD355

Designing Computer Supported Knowledge Building

These new workshops have been well-received. For example, AD355, that aims to equip participants with knowledge and skills to design and implement Knowledge Building within their own classrooms, was rated by participants a **four out of five**. Participants also highlighted that they enjoyed the discussions during the workshop.

Attendance of TLC Faculty Development Workshops by Schools

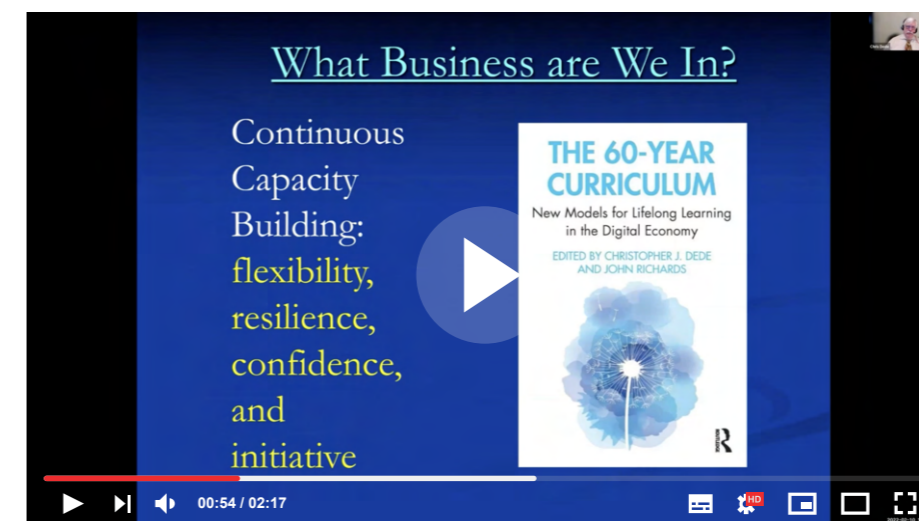


Rebranding of Teaching & Learning Conversation and In Conversation with TLC

The **Teaching & Learning Conversation and In Conversation with TLC** professional sharing platforms would be presented as T&L Conversation with three tracks going forward:



This year, we were privileged to have SUSS Provost Professor Robbie Goh share his experiences and expectations on building a teaching dossier, and international scholars including Assistant Professor Juuso Henrik Nieminen from The University of Hong Kong and Professor Christopher Dede from Harvard Graduate School of Education share their expert knowledge in the fields of lifelong learning and assessment with SUSS. For the first time in recent years, the series also saw SUSS students sharing their learning experiences, as they transited to a tertiary education that switched between learning modes during the pandemic.



Key Events

2022 has been exciting and fruitful. With the change in COVID-19 measures, we finally had a chance to meet in-person at some of our events. Here are some highlights from our events this year!



Inaugural SUSS SoTL Symposium 2022

The inaugural Scholarship of Teaching & Learning Symposium took place from 29 Nov to 1 Dec 2022. We were honoured to have Minister for Education Chan Chun Sing to grace the event and announce the launch of the New SUSS Curriculum that would be implemented from July 2023. Professor Christopher Dede from Harvard Graduate School of Education also gave a keynote speech on the 60-Year Curriculum, sharing key ideas on the new models of lifelong learning in the digital economy. International scholars and industry partners gathered over the next two days to examine principles and mechanisms of learning and skills development in order to generate ideas to enhance teaching and learning.

Faculty Appreciation Event 2022

After a 2-year hiatus, TLC was able to finally organise the Faculty Appreciation Event on 23 Jul 2022 at Pan Pacific Hotel. Faculty Appreciation Event 2022 was SUSS's first large-scale in-person event, organised for both associates and faculty, after the change in COVID-19 measures. About 400 associates and faculty members attended the event, and about 250 award winners were celebrated and recognised for their contributions towards quality education in SUSS.





Start Of Semester – January 2022

The Start of Semester Session was held virtually in January. Over 300 new and existing Faculty and Associates attended the session during which, SUSS President Professor Cheong Hee Kiat addressed questions concerning SUSS, teaching and learning. The session was followed by a T&L Conversation where Ms Tan Lee Cheng, Award recipient of SUSS Award of Teaching Excellence shared her teaching experiences during the pandemic.



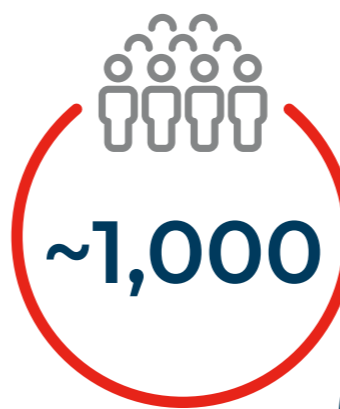
Start Of Semester – July 2022

The July 2022 Start of Semester Session was the first in-person session held after 2 years. Attended by over 50 new associates and faculty, everyone finally had the chance to mingle with one another. SUSS Provost Professor Robbie Goh also addressed the session and shared briefly some upcoming changes. The session ended with a sumptuous bento lunch!

Event Highlights



Total participants for all events



Scholarship of Teaching & Learning

Progress Update – Research Project MOETRF-019-020

Drs Vikki Bo and Lyndon Lim successfully completed a research project funded by MOE Tertiary Research Fund (TRF) on the efficacy of the SUSS English Proficiency Programme. Completed over two years, the project studied how English for Academic Purposes programmes impacted multilingual domestic university students.

Arising from the project, the research team proposed the adoption of the SILVER framework to better support students in their degree programmes.

Dr Bo will be furthering the project by investigating teachers' perceptions of students' proficiency of academic English to shed light on what can be done to provide better EP support to students.



Formation of SoTL Special Interest Group (SIG)

Comprising like-minded faculty interested in the scholarship of teaching and learning, the SoTL SIG was formed in May. The SIG gathered to share research ideas and interests and how these might improve teaching and learning. In the second half of the year, the SIG also benefited from two engagements with Dr Anneliese Dahl and Professor Manu Kapur from ETH Zürich who generously shared about their SoTL journeys and research approaches.

New Grants Awarded



Institute for Adult Learning (IAL) Workforce Development Applied Research Fund (WDARF) 2021

Examining the Implementation of Practice-based Work Approach for the Professional Learning of Associate Faculty in SUSS

The study aims to examine the design of a practice-based learning approach in two graduate certificate courses aimed at building up the teaching and learning capacity of Associate Faculty. At the end of the research, the team aims to come up with a model of Practice-based Work for professional development of educators of higher learning.

Principal Investigator:
Assoc Prof Jennifer Yeo, SUSS

Co-PI:
Assoc Prof Rebekah Lim, SUSS

Collaborator:
Chan Kah Mun, SUSS

Awarded amount:
~\$240,000

Duration:
2 years



MOE Start-up Grant 2022

A knowledge building approach to teacher professional development – impact on teachers' epistemologies, conceptions and practices

The purpose of this project is to design professional development workshops for university teachers using knowledge building approach and examine its impact on their epistemic beliefs, conception of teaching and learning, and teaching practices.

Principal Investigator:
Dr Lin Feng, SUSS

Co-PI:
Asst Prof Zhu Gaoxia, National Institute of Education, Singapore

Award amount:
~\$65,000

Duration:
1.5 years

Training and Consultancy

In support of our commitment towards inspiring excellence and enabling success, TLC faculty offers consultancy and training services to industry partners. **We thank the following for their engagement in 2022, and trust in our expertise in areas related to adult learning, curriculum, pedagogy and assessment:**



SAFTI Military Institute,
Institute of Military Learning



Home Team Academy,
Centre for Learning Systems



Majlis Ugama Islam Singapura
(Islamic Religious Council of Singapore)

Islamic Learning Hub
and Management Office



Centre for Teaching &
Learning Development



Centre for Learning &
Teaching Excellence



Southeast Asian Regional
Center for Graduate Study
and Research in Agriculture



The Head Foundation



Acknowledgements

We would like to thank the following colleagues, scholars, practitioners and industry partners for generously sharing their ideas at the various TLC events and workshops this year.

Student Representatives	OneSUSS
Andrew Brown, PhD	Emeritus Professor, University College London Institute of Education, United Kingdom
Ang Tian Teck	Sticky Spy PTE LTD
Anneliese Karmer-Dhal, PhD	Educational Consultant
Bi Xiaofang, PhD	Senior Researcher, Institute for Adult Learning, Singapore University of Social Sciences
Brian Lin	Director, Centre for Learning Systems, Home Team Academy
Celine Ooi	Associate Faculty, Singapore University of Social Sciences
Centre for Management Practice	Singapore Management University
Christopher Dede, EdD	Professor and Senior Research Fellow, Harvard Graduate School of Education, United States of America
Chui Yoon Ping, PhD	Associate Professor and Deputy Dean, Singapore University of Social Sciences
David Boud, PhD	Alfred Deakin Professor and Foundation Director of the Centre for Research in Assessment and Digital Learning, Deakin University, Australia
Elaine Chapman, PhD	Associate Professor and Graduate Research Coordinator, The University of Western Australia, Australia
Emily Ortega, PhD	Associate Professor and Head of Programme, Singapore University of Social Sciences

Eva Wong, PhD, PFHEA	Principal Fellow, Hong Kong Baptist University, Hong Kong SAR
Iris Reading LLC	Chicago, United States of America
Ferlin Jayatissa	Associate Professor and Head of Programme, Singapore University of Social Sciences
Frank Fischer, PhD	Professor, Ludwig-Maximilians-University, Germany
Dr Girija Veerappan	Director, Centre for Educational Development Republic Polytechnic
Helen Bound, PhD	Associate Professor and Deputy Director, Institute for Adult learning, Singapore University of Social Sciences
Hendrik Drachsler, PhD	Professor and Director, Leibniz Institute for Research and Information in Education, Germany
Janice Orrell, PhD	Emeritus Professor, Flinders University, Australia
Jessica Dang	Associate Faculty, Singapore University of Social Sciences
Jonathan Leong, PhD	Senior Lecturer and Head of Programme, Singapore University of Social Sciences
Juuso Henrik Nieminen, PhD	Assistant Professor, The University of Hong Kong, Hong Kong SAR
Lauren Yeo	Associate Faculty, Singapore University of Social Sciences
Lum Seow Kun	Director, Public Sector Group, Microsoft Singapore
Manu Kapur, PhD	Professor, ETH, Switzerland
Matthew Ong	Associate Faculty, Singapore University of Social Sciences
May Lim, PhD	Assistant Provost, Singapore Institute of Technology

Melissa-Mae Saradetch, PhD	Associate Faculty, Singapore University of Social Sciences
Michelle Eady, PhD, SFHEA	Associate Professor, University of Wollongong, Australia
Moira Lee, PhD	Lead Specialist, Temasek Polytechnic
Renee Tan, EdD	Associate Professor and Director, Institute for Adult Learning, Singapore University of Social Sciences
Rita Padawangi, PhD	Associate Professor, Singapore University of Social Sciences
Robbie Goh, PhD	Professor and Provost, Singapore University of Social Sciences
Robert Kent Weaver, PhD	Distinguished Professor, Georgetown University
Preman Rajalingam, PhD, PFHEA	Director, Centre for Teaching, Learning & Pedagogy, Nanyang Technological University
So Hyo Jeong, PhD	Professor, Ewha Womans University, Korea
Tan Lee Cheng	Senior Lecturer, Singapore University of Social Sciences
Tan Seng Chee, PhD	Associate Professor and Associate Dean, National Institute of Education, Nanyang Technological University
Theresa Pong	Associate Faculty, Singapore University of Social Sciences
Thum Cheng Cheong	Associate Faculty, Singapore University of Social Sciences
Wayne Wong, PhD	Associate Faculty, Singapore University of Social Sciences
Yang Silin, PhD	Assistant Director, National Trades Union Congress, Singapore



 <https://suss.edu.sg/tlc>

 tlc@suss.edu.sg

Singapore University of Social Sciences | 463 Clementi Road, Singapore 599494